

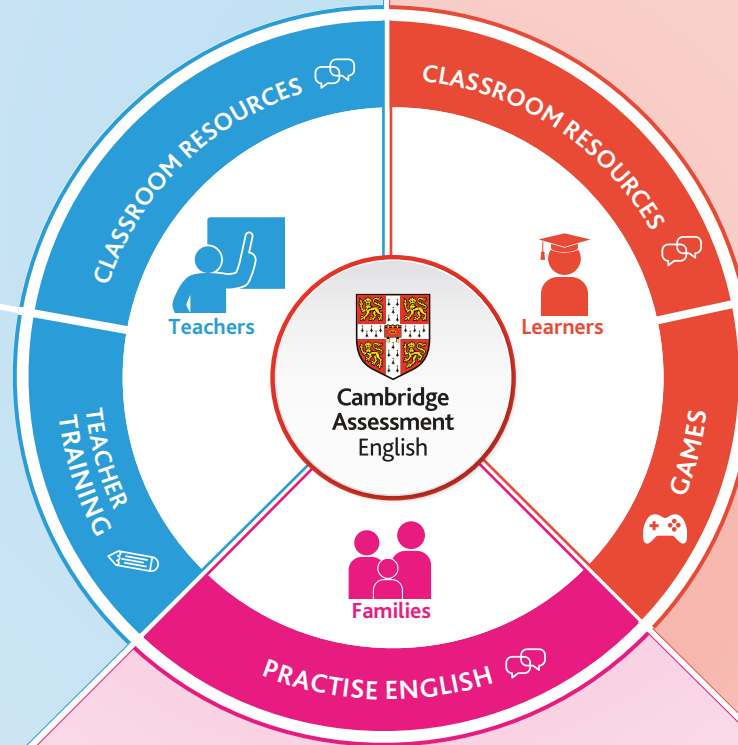
CEFR LEVELS

The Common European Framework of reference (CEFR) describes language ability on a scale of levels from A1 to C2.

It is used around the world to describe learners' language skills.

- PRE-A1, A1, A2, B1, B2 | [WRITE & IMPROVE](#)
- A1, A2, B1, B2, C1, C2 | [LEARNING ENGLISH](#)
- B1, B2 | [VIRTUALLY ANYWHERE](#)
- [CHAT TO CAMBRIDGE ENGLISH](#)
- PRE-A1, A1, A2, B1, B2, C1, C2 | [OTHER RESOURCES](#)
- PRE-A1, A1, A2, B1 | [PENFRIENDS](#)
- PRE-A1, A1, A2 | [WORLD OF FUN](#)
- A2, B1, B2 | [WEEKLY](#)
- [PRACTICE MAKES PERFECT](#)

- [WRITE & IMPROVE](#) | PRE-A1, A1, A2, B1, B2
- [LEARNING ENGLISH](#) | A1, A2, B1, B2, C1, C2
- [VIRTUALLY ANYWHERE](#) | B1, B2
- [CHAT TO CAMBRIDGE ENGLISH](#)
- [CAMBRIDGE ENGLISH](#) 360° VIDEOS



- [WEBINARS](#)
- [SEMINARS & CONFERENCES](#)
- [MOOCS](#)
- [THE DIGITAL TEACHER](#)
- [CAMBRIDGE ENGLISH TEACHING FRAMEWORK](#)
- [QUALIFICATIONS & COURSES](#)

- [FUNLAND](#) | A1, A2, B1
- [SHOP & DROP](#) | PRE-A1, A1, A2
- [MONKEY PUZZLES](#) | A1, A2
- [ACADEMY ISLAND](#) | B1, B2, C1
- [CAMBRIDGE ENGLISH FC](#) | B2, C1
- [QUIZ YOUR ENGLISH](#) | B1, B2
- [MONKEY PUZZLES WORLD TOUR](#) | PRE-A1, A1, A2

ALL RESOURCES IN THIS INFOGRAPHIC HAVE A LINK TO ITS OWN PLATFORM

SKILLS TO PRACTISE: Reading Writing Speaking Listening

Beta Version APP: available in Google Play and Apple Store

PRE-A1, A1, A2 | [ACTIVITIES FOR CHILDREN](#)

PRE-A1, A1 | [SING & LEARN](#)